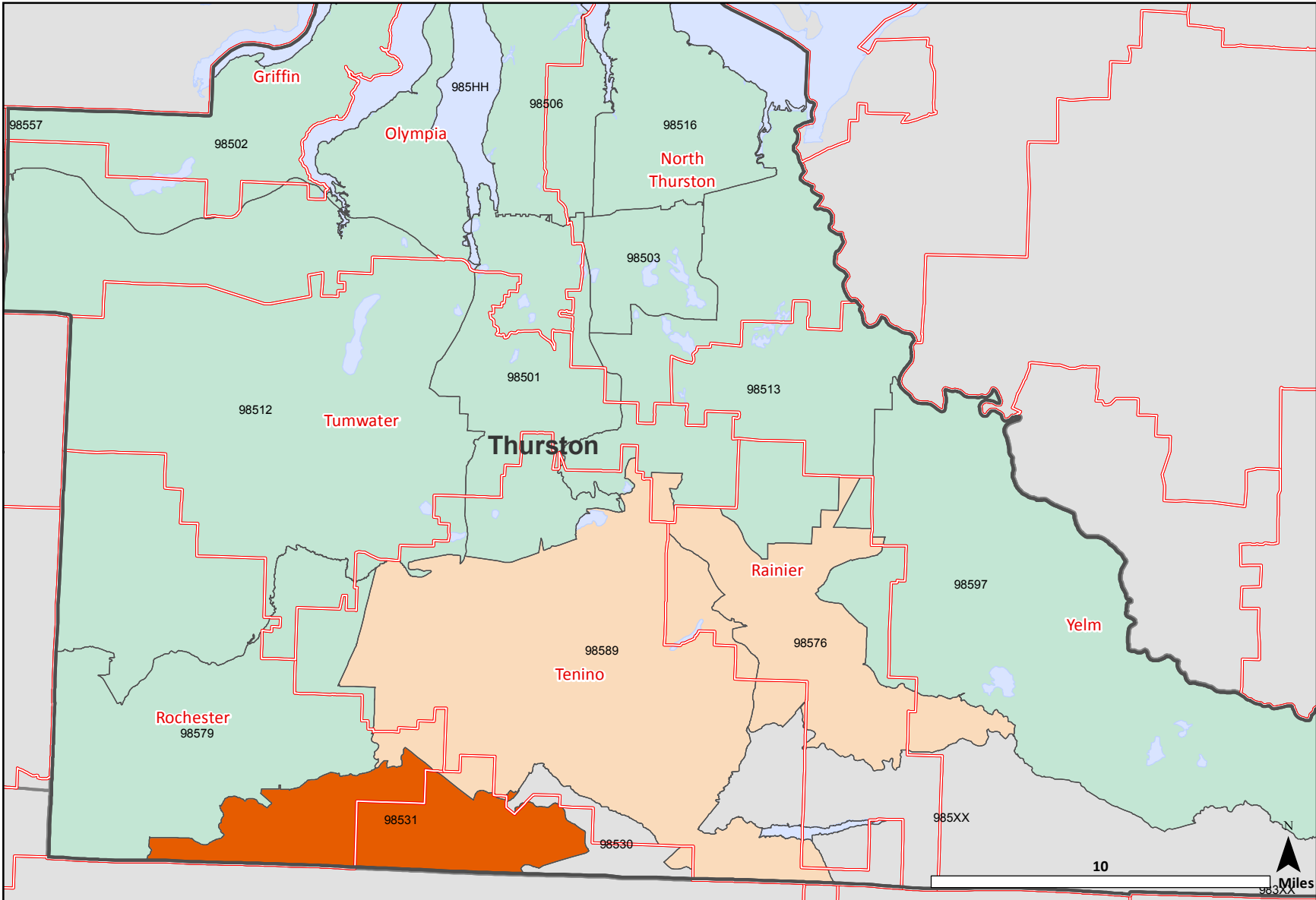


Composite Risk Score

by Zip Code Tabulation Area (ZCTA), Thurston County, 2009



Composite Risk Score

- VERY HIGH
- high
- average
- low

Map Features:

- School Districts
- Counties
- Highways
- Water
- Not applicable

DATA NOTES: Composite Risk Score is an average of risk scores for the following three domains: Poor Mental Health, Economic Deprivation, and Troubled Families. The domain risk scores were calculated using standardized indicators in each domain. Composite Risk Score for each ZCTA is mapped based on the standard deviations from the mean score. ZCTAs are generalized area representations of ZIP Code service routes developed by the Census Bureau for tabulating summary data from Census 2000.

SOURCES: DSHS Research and Data Analysis, Community Outcome and Risk Evaluation Geographic Information System (CORE-GIS). County, School District, and ZCTA boundaries from US Census Bureau 2009 TIGER files.